

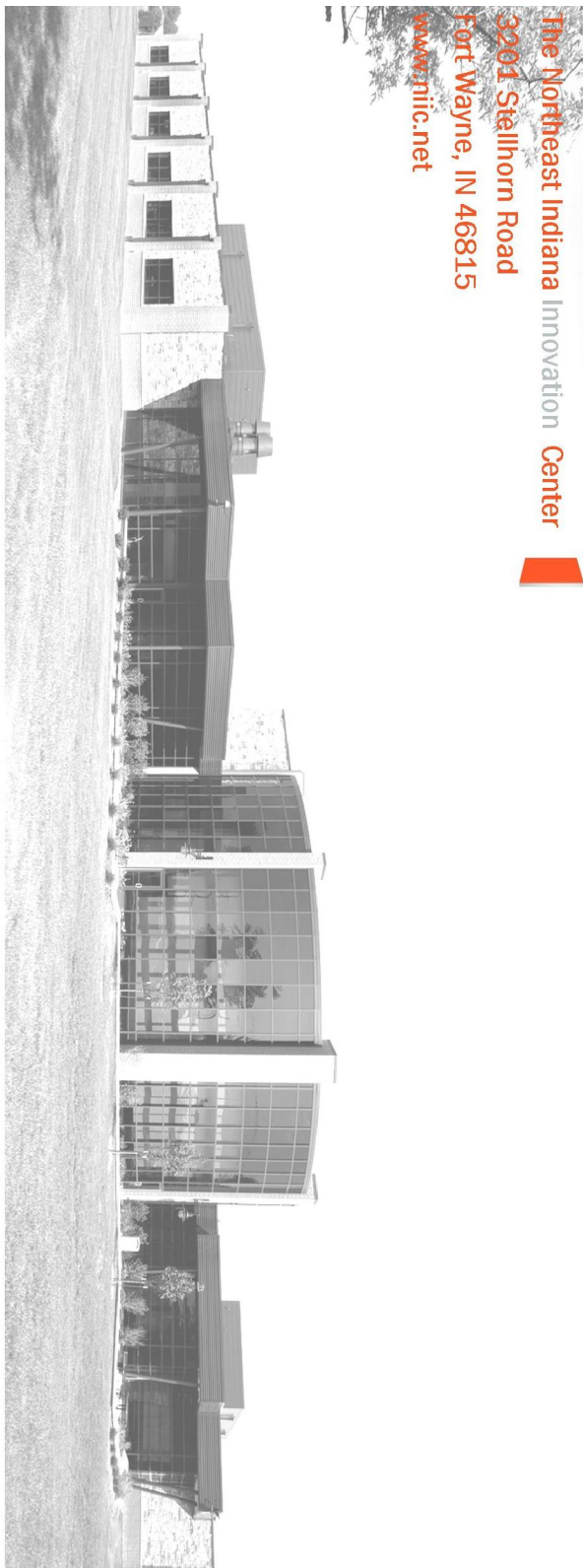
The Northeast Indiana Innovation Center is a business resource center and technology Incubator whose mission is to create economic growth, investment, business formation, and jobs for Northeast Indiana by fostering the creation and expansion of high-potential, high growth companies.

NIIC has many programs to support and encourage the growth of new, high-tech ventures in Northeast Indiana. From brand-new startups who need a place to grow and thrive, to established businesses with fresh ideas looking to expand in emerging markets.

From biomedical and information technology to specialized materials and advanced manufacturing, NIIC is seeking creative entrepreneurs who will drive Indiana's emergence as a recognized leader on the national scene.


The common thread among NIIC entrepreneurs is innovation; the common goal is creating successful new companies and sustaining, invigorating and accelerating growth for Northeast Indiana.

Do you have the next great idea or promising business venture? We invite you to apply or visit us at [www.niic.net](http://www.niic.net)



The Northeast Indiana Innovation Center  
3201 Stellhorn Road  
Fort Wayne, IN 46815  
[www.niic.net](http://www.niic.net)


[www.niic.net](http://www.niic.net)



# InnovationCenter

*ideas@work*

*Expanding Possibilities*



3201 Stellhorn Road  
Fort Wayne, IN 46815  
Ph: 260-407-6442  
Fax: 260-492-0452  
[www.niic.net](http://www.niic.net)

# The Northeast Indiana Innovation Center

The Innovation Center (NIIC) is dedicated to developing ideas and growing businesses in the fields of biotechnology/biomedical, information technology, and advanced manufacturing processes. The Innovation Center's state-of-the-art 40,400 sq ft incubator facility anchors Indiana's Fifth Certified Technology Park (55 acres). The facility is thoroughly equipped to assist entrepreneurs and business expansions in these specific fields. With the latest technology and state of the art communications, NIIC's hands on approach to business coaching and access to essential business resources will help to accelerate company growth.

## Our Facility:

### Biomedical Research Center and Life Sciences Wing:

- 17,000 sq ft
- 13 Laboratory Suites (fully equipped) with availability for growth and expansion
- 11 Executive Biomedical Offices
- Chemical/Server Storage Closets
- Shared Biomedical Critical Equipment Room with Reverse Osmosis water system and De-ionized water supplies

### Information Technology and Communications Center:

- 19,000 sq ft
- 15 Modular Office Suites capable for Expansion and Growth
- 12 Executive Offices
- Server/Storage Closets
- Shipping/Receiving Dock

### Community and Administrative Center:

- Full Service Concierge
- Access to 6 High Technology Conference Rooms
- Surveillance and Access Control Security Systems
- Full Kitchen Access/Break Rooms/Vending Machines
- Wireless Access Hotspots
- Mirro Family Business Center
- PHP Wellness Studio
- Informal Meet Me Centers
- Entrepreneurial Resource Library

## Our Business Coaching, Assistance, and Development Services:

NIIC concentrates on assisting high growth start-up companies to achieve a firm foundation necessary for survival. The Center for Entrepreneurial Excellence (CEE) is the premier engine NIIC uses to engage in several types of business counseling services and provides knowledge resource opportunities to ensure accelerated business infrastructure development. With a variety of curriculum and support services, the CEE's encompassing advocacy and counseling will enhance any entrepreneurial idea and design.

## Innovation Center Membership Classifications and Services:

Accelerator Resident Client Membership: Addressing needs of high growth and potential, unlimited access to business resource materials and highly concentrated opportunities with the CEE.

Incubated or Resident Client Membership: Working on a regular basis with the CEE, targeting innovative growth ideas, counseling, and providing opportunities for business enhancement and networking.

Affiliate Client Membership: CEE resources and services may be offered and applied to members advancing towards pre-incubation stages and targeting potential growth opportunities.

Innovation Hopper Pass: For interested, motivated individuals and/or companies with opportunities for business coaching, development, and market research/service learning projects with all NIIC staff.

Virtual Services Client Membership: Enhancing services of the business center and resources at the Innovation Center for virtual clients, including access to NIIC facilities and CEE business Coaching.

Conferencing services: NIIC's 40,400 sq ft facility is fully integrated and equipped with 6 high technology conference rooms, ranging from 2-80 in capacity. Please see NIIC's Conferencing Brochure for complete details.

NIIC Gateways: Based on Pittsburgh Gateways' highly successful stage gate model, NIIC Gateways structured product development program helps nascent national technology leaders reach their venture's full potential. NIIC Gateways is a technology venture acceleration program for high-potential Northeast Indiana technology ventures.

NIIC Capital Ventures: NIIC Capital Ventures is a wholly owned nonprofit subsidiary of NIIC that supplies the capital needs of promising, high-tech Innovation Center clients through gap financing (pre-seed and start-up funding), asset-based financing, and working capital loans.

## Innovation Center Business Development and Coaching:

- Vision Engineering
- Idea & Concept Feasibility Analysis
- Business Planning/Strategic Planning
- Market Assessment
- Market Analysis
- Market Research
- Financial Planning and Plan Development
- Revenue Generation, Market Planning, and Sales Development
- Management Team Planning
- Operations and Growth Planning
- New Product/Innovation Assessment
- Strategic Market Planning